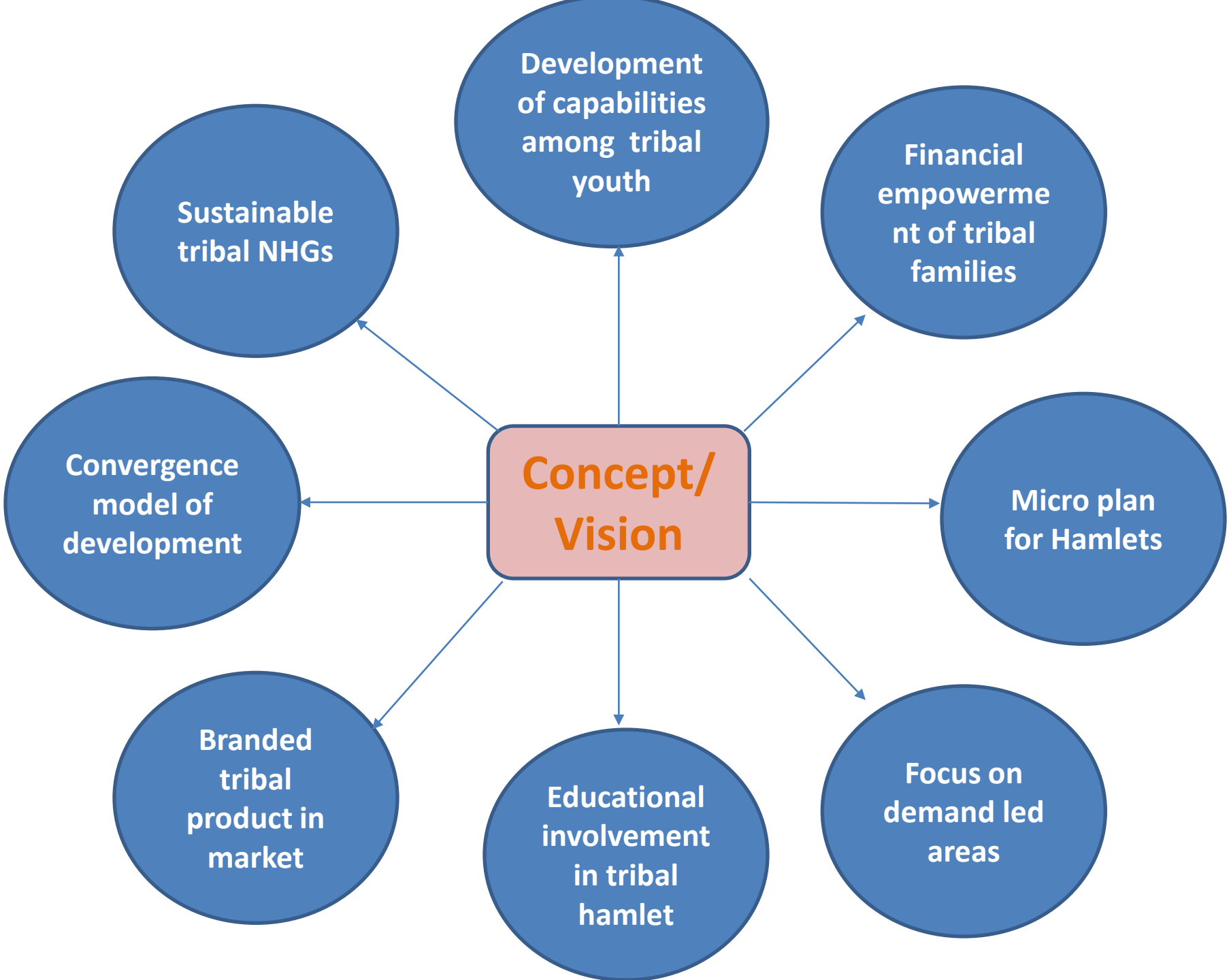


TRIBAL INTERVENTIONS 2019-2020

SOCIAL INCLUSION & SOCIAL DEVELOPMENT

TEAM TRIBAL

INVISIBLE TO VISIBLE



Sustainable Tribal NHGs

NO	Components	Parameters
1	Model NHGs- Complete self reliant NHGs	75 % to 100 % linkage of tribal NHGs
2	Capacity building of NHGs/Families	Coverage of entitlements among 90 % tribal family

Development of capabilities among tribal youth

NO	Components	Parameters
1	Focusing on competitive exam preparation	Ensure job for 2 youths per animator (target for 350 animator)
2	Capacity building among tribal youths for LH	50 % of tribal family have one earning member

Financial empowerment of tribal families

NO	Components	Parameters
1	Financial literacy focus in tribal NHGs	Ensure the 50 % savings of MGNREGA wages of tribal women in the account for 12 months
2	Family budgeting campaign	
3	SVEP model interventions	

Micro plan for Hamlets

NO	Components	Parameters
1	Need analysis campaign among tribal NHGs	5 Volunteers capacity building of 50 % of tribal NHGs
2	Entitlements information collection	90 % family ensure minimum 3 entitlements
3	Hamlet micro plan preparation	Coverage of 4000 scattered tribal families into Kudumbashree folder

Educational involvement in tribal hamlet

NO	Components	Parameters
1	Tuition support for school going students	200 bridge courses for students
2	Career guidance's and follow up	Admission of 100 tribal Students into Navodaya
3	Address the issues of drop outs	500 tribal candidates registration in SCOLE Kerala
4	Adult literacy interventions	1000 Members achievement in 4 th equailancy

Branded tribal product in market

NO	Components	Parameters
1	Tribal Craft marketing	Tourism focus out let in 14 district
2	Traditional product branding	3 NTFP product branding & distribution through TRIFED
3	Tribe's modern product	Branding of Coir product of alappuzha

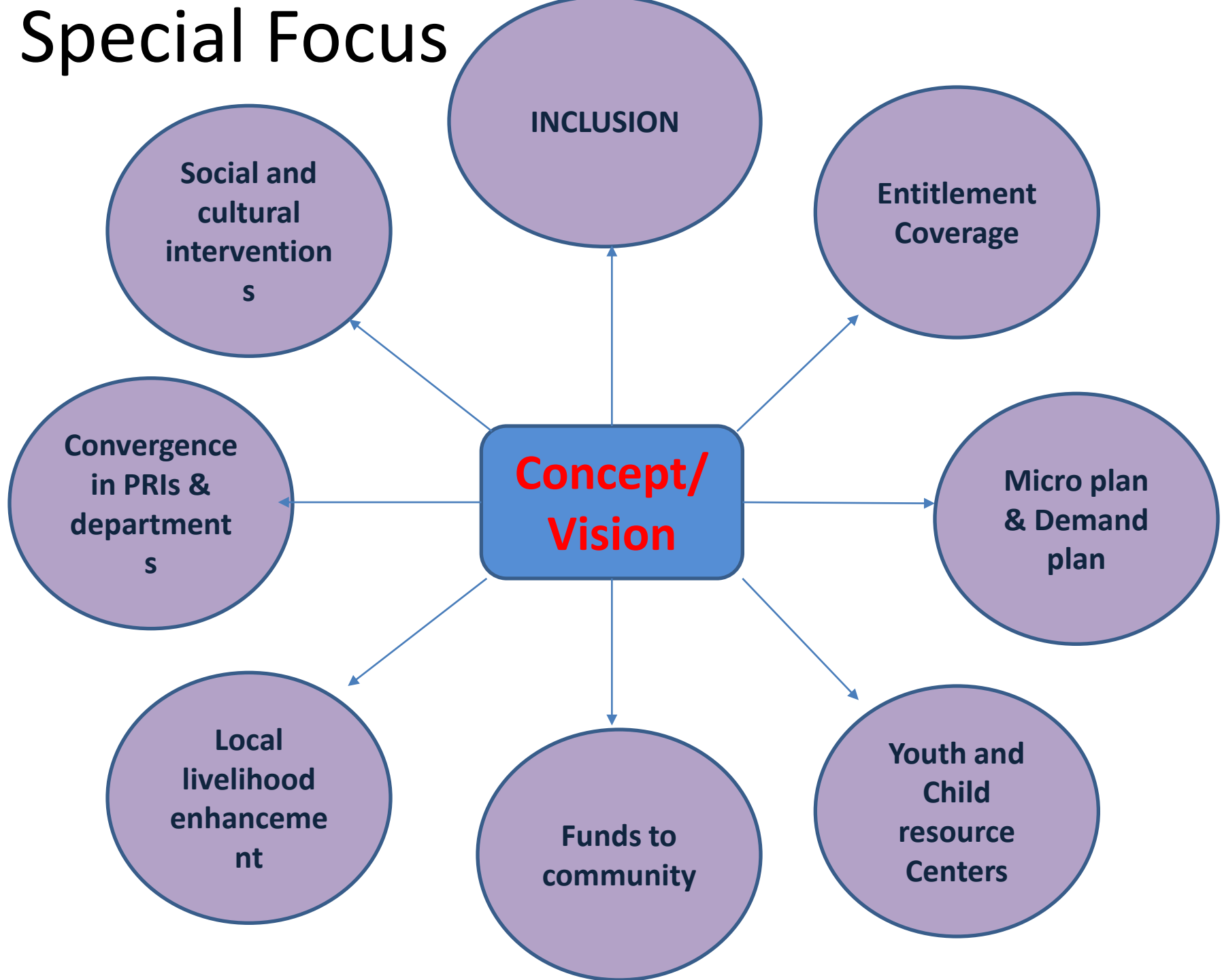
Convergence model of tribal development

NO	Components	Parameters
1	Advance wage payment expansion in vulnerable area	Increase of tribal job card holders to 10%
2	Community kitchen for PVTGs	Ensure 11-14 HB for tribal pregnant women
3	P K kalan project	Covering of 2 LSGIs in each district

Focus on high demand areas

NO	Components	Parameters
1	Thirunelly Wayanad	50 % Migrant rehabilitation through local employment
2	Aralam Farm Kannur	3 organic cluster- Vegetables, Tuber crops, coconut product.
3	Nilambur constituency Malppuram	NTFP based livelihood for 300 members
4	Kadar category Thrissur	Tourism related LH for 50 families
5	Koraga category Kasaragod	Sustainable livelihood for 200 members in Traditional sector
6	Malmbandara Category Pathanamthitta	Coverage of 100% basic entitlements

Special Focus



THANKS