



KUDUMBASHREE

FARMER PRODUCER ORGANISATIONS

Consultation meet at NABARD

4th September 2018

Overview

1. Introduction about Kudumbashree

2. Farm Livelihood Activities (MKSP)

3. Existing producer company details

4. New producer companies

5. Flood loss assessment



KUDUMBASHREE

- **Launched by Government of Kerala in 1998 for wiping out absolute poverty from State through concerted community action under the leadership of Local Self Governments.**
- **One of the largest women-empowering projects in country**
(Around 43 lakh members)



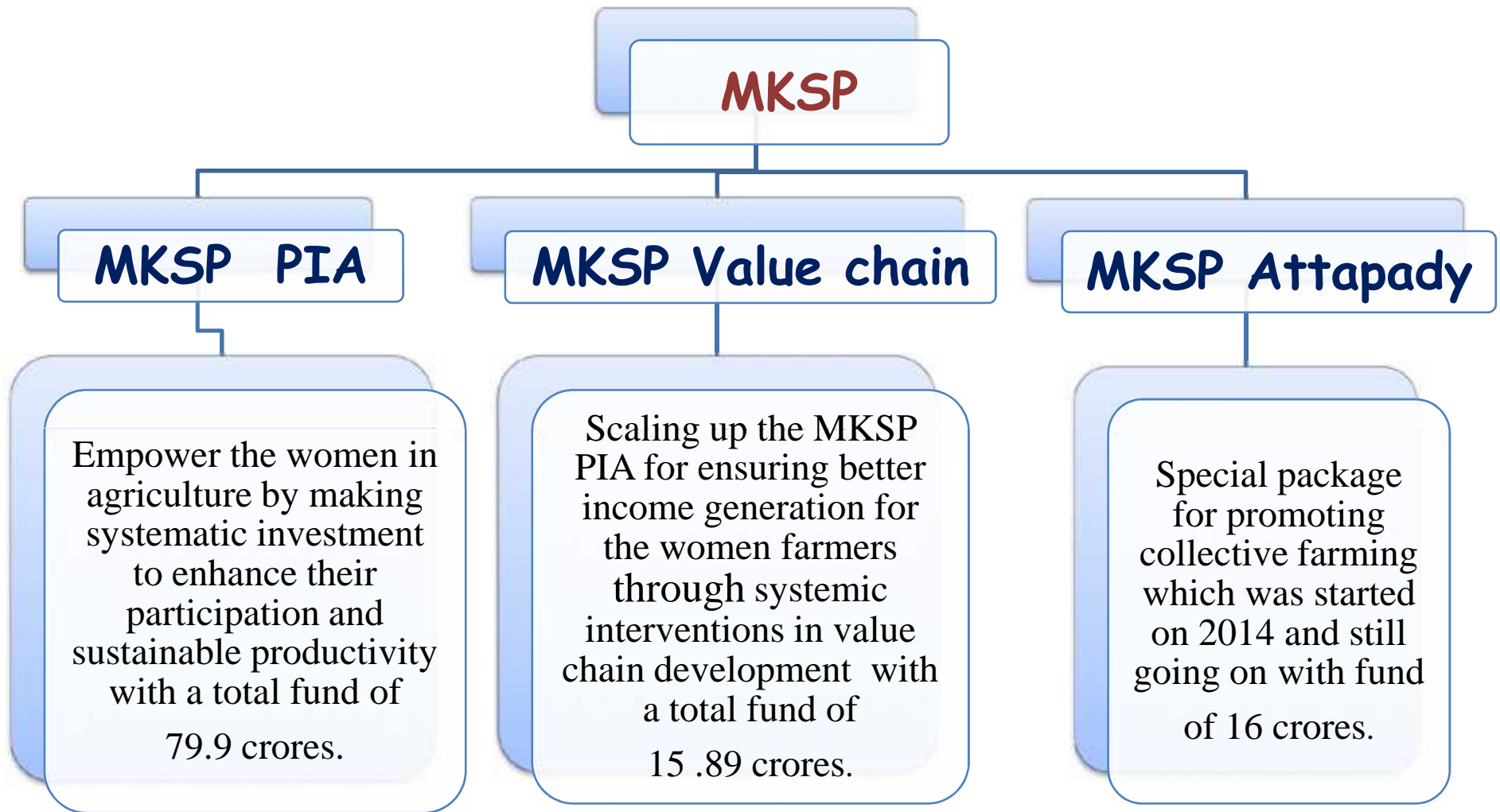
Mahila Kisan Sasaktheekaran Pariyojana (MKSP)



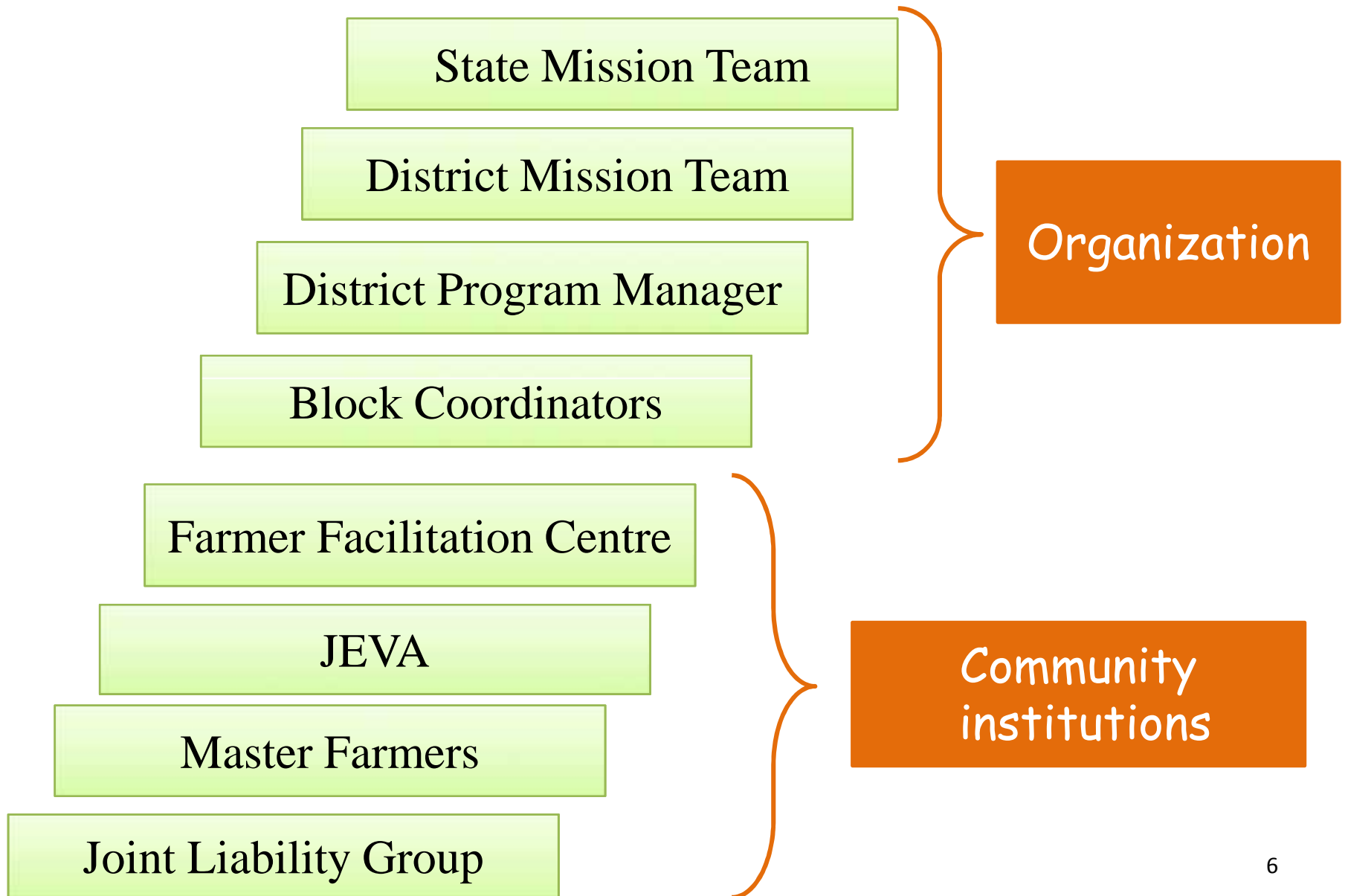
Aims at increasing the visibility of women in agriculture, reducing drudgery and providing a livelihood opportunity by adopting sustainable and eco friendly agriculture

A sub component of the National Rural Livelihood Mission (NRLM)





MKSP- Kudumbashree- Structure





JLG ...

Group of
4-10 members
from different or
same NHGs

Undertakes farming on lease lands or owned lands

Registered entity with the CDS

Elects leaders and maintain records





**70388 JLGs with membership of more than
3.2 lakh women farmers**

52490 Ha of land put under cultivation

Master Farmers & JEVA

Community cadre of women resource persons attending to agriculture activity

Selected from community – through three level selection process

Trained and placed at village level to support JLG

1 master farmer is in charge of 20 JLGs

One block have 4 JEVA members

Farmers Facilitation Centres (FFC)

- *One stop point for knowledge exchange at village level*
- *Act as tool bank, helps in reducing drudgery*
- *Convergence of services*



Details of producer company

Producer Company	District	Produce	Year of formation	Present status	Remarks
Edakkara Agro producer company ltd.	Malappuram	Poultry, cattle	2015	Running in profit	Net Profit of 4 lakhs
Alamcode agro producer company ltd	Malappuram	Rice	2015	Running in loss	Lack of processing mill, high rent for storage godowns, high transportation charges
Thennala agro producer company	Malappuram	Rice	2015	Running in loss	Loss due to lack of processing mill and proper storage.
Kannur goat farmer's producer company	Kannur	Goat meat	2015	Running in profit	Annual turn over of 54.4 lakhs
Imashree milk producer company	Idukki	Milk	2015	Running in loss	Milma providing more subsidies to the farmers

2018 - 19 Plan

AG 07 Producer Company

- Establishing district / CDS level collectives and formation PCs by providing technical and financial support with assistance of NABARD promotional incentive @ 2 lakhs per PC

AG 11 Paddy Producer Company

Establishing collectives and formation of state level paddy producer company



Fund Allocation (in lakhs)

Programme title	NRLM	MKSP	MKSP value chain	Total
Producer companies	15.4	--	130	145.40
Paddy producer company	22.25	430	100	552.25

Already approved PCs by NABARD

Districts	Commodity identified
Thiruvananthapuram	Poultry
Pathanamthitta	Honey
Alappuzha	Vegetables
Kottayam	Goat
Idukki	Dairy
Ernakulam	Poultry
Thrissur	Rice, Banana, Kadali
Palakkad	Dairy
Malappuram	Paddy
Kozhikode	Paddy
Wayanad	Paddy, Vegetables, Dairy
Kannur	Goat
Kasaragod	Paddy



Reconstituted list of PCs

Districts	Commodity identified	Progress so far
Thiruvananthapuram	Tapioca	Mobilization and cluster meeting going on
Kollam	Banana	Mobilization and cluster meeting going on
Pathanamthitta	Honey	Mobilization and cluster meeting going on
Alappuzha	Egg	Mobilization and cluster meeting going on
Kottayam	Paddy	Mobilization and cluster meeting going on
Idukki	Vegetables	Meetings going on, collected share from 110 beneficiaries
Ernakulam	Paddy	Mobilization and cluster meeting going on
Thrissur	Paddy	Conducted training to the beneficiaries, selected director board members, collected share amount
Palakkad	Paddy	Mobilization and cluster meeting going on
Kozhikode	Paddy	Mobilization and cluster meeting going on
Wayanad	Fruits, Vegetables and Dairy	Conducted primary level training supported by NABARD
Kannur	Paddy, Spices and Pulses	Mobilization and cluster meeting going on
Kasaragod	Paddy	Mobilization and cluster meeting going on

Assistance given to the members by Kudumbashree

Mobilization	Staff training and capacity building on PC formation Exposure visits Training and handholding support
Act as POPI	Kudumbashree act as POPI for FPOs
Administration expense	Salary of CEO and accountant. Meeting of the BOD. Assistance given @ 60000/PC
Infrastructure funds	3 lakh/ collectives and PCs
Share capital	6 lakhs (approx) per FPC as share capital
PPPF	Rs.20 lakhs / collective in two instalments.
Fund for establishment of CFCs	25 lakhs each for setting 4 CFCs exclusively for paddy

Flood Loss Details

Districts	Linkage Amount (crores)	Estimated Crop Loss (in %)	Estimated Loss of linked JLG (crores)
TVM	0.10	70	0.76
KLM	2.31	70	1.61
PTA	25.2	90	22.68
ALP	1.38	90	1.2
KTM	11.52	90	10.36
IDK	5.98	90	5.38
EKM	29.67	90	26.70
TSR	80	90	72
PKD	28.57	70	20
MPM	9.8	90	8.82
KZD	2.83	90	2.5
WYD	38.99	66	26
KNR	1.04	90	0.93
KGD	7.12	30	2.13
Total	244.51		201.07

- Total no of JLGs : 70388
- No of JLGs linked : 38500
- Linkage Amount : 244.51 Cr
- Total crop loss including non linked JLGs : 400 crores

Thank you

